

THE MACEDONIAN PROBLEMIST

The best of Macedonia!

PETKO A. PETKOV MEMORIAL TOURNEY 2024-2025

(Extended closing date for the fairy section)

Theme: Fairies of any kind with:

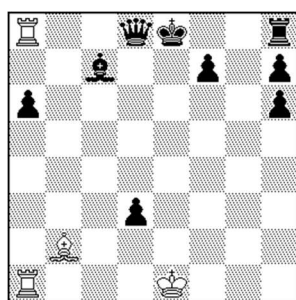
- 1) “Bulgarian Hoppers”; **or**
- 2) “Masand” or “Bolero” (or related “Bolero” family) conditions

In addition to one of the above thematic elements (1 or 2), any other fairy chess element is allowed, but other fairy chess inventions by Petko A. Petkov would be most appreciated.

More information about the “Bulgarian Hoppers” are available in issue 1 of *Anda Fairy Planet* (<https://juliafairies.com/wp-content/uploads/ANDA-Fairy-Planet-No-1-2020.pdf>).

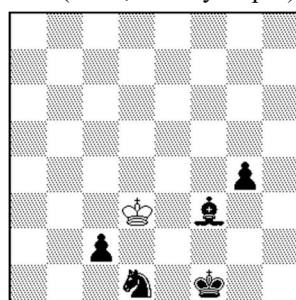
More information about the “Masand” and “Bolero” conditions are available in issue 1 (see the above link) and 2 of *Anda Fairy Planet* (<https://juliafairies.com/wp-content/uploads/ANDA-Fairy-Planet-No-2-2020.pdf>). Bolero, Bolero Inverse, Bolero Rex Inclusive and Bolero Inverse Rex Inclusive are explained in Petko’s article “Four new fairy conditions called ‘Bolero’”, *StrateGems* 2019 (<http://www.kotesovec.cz/articles/bolero.pdf>).

№ 1. Petko A. Petkov
StrateGems 2019 (scheme)



H#2 Bolero 4+9

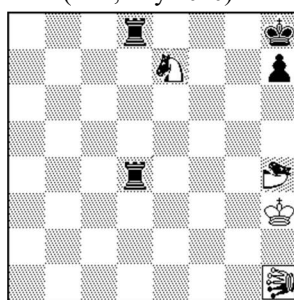
№ 2. Ivo Tominić
The Macedonian Problemist
2021 (№ 64, January–April)



H#3 Masand 1+5

b) ♞d1→f5

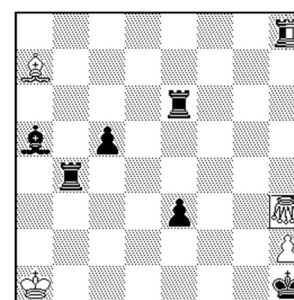
№ 3. Petko A. Petkov
Anda Fairy Planet 2020
(№ 1, July 2020)



H#2 2 solutions 1+4+3

♞ = Bulgarian neutral leo
♞/♞ = neutral knight/camel

№ 4. Petko A. Petkov
Julia’s Fairies 2020
Dedicated to Christian Poisson



H=4 2 solutions 4+6+1

♞ = Bulgarian grasshopper
♞ = neutral rook

№ 1: 1.0-0 0-0-0 2. ♞e7 ♞g4#. ♞ on f8 must be pinned in the mating position, to prevent 3. ♞f8-g7!, and the black queen cannot play 3. ♞g5? because from e7 it can play only as a king. *Bolero:* A piece “x” (except for all kinds of kings and pawns) making capturing moves plays in the usual way, according to the rules of movement for its own nature. When making non-capturing moves, “x” plays like a: rook if located on the “a” & “h” files; a knight if located on the “b” & “g” files; a bishop if located on the “c” & “f” files; a queen on the “d” file; a king on the “e” file (to all neighboring squares, but without acquiring a royal status). Castling is permitted if the king and rook are on their starting positions, or with Circe-reborn king and rook and the squares between them (except for squares b1/b8 at long castling) are not attacked by enemy pieces according to the *Bolero* condition.

№ 2: a) 1. ♞e2+(d1=w) (g4=w) ♞:c2 2. ♞c4 ♞e3+(c4=w) (g4=b) 3. ♞e1 ♞:g4=; b) 1. ♞e4+(f5=w) ♞e3 2.g3 ♞:g3+(e4=w) 3. ♞e1 ♞:c2=. *Masand:* A moving piece which directly attacks the opposite king changes the colour of the pieces it guards or attacks, except the kings. A rook becoming white on a1 or h1, or black on a8 or h8, can castle.

№ 3: 1. ♞a4 ♞d5 2. ♞aa8 ♞:a8(♞f7)#, 1. ♞a8 ♞g1 2. ♞a1 ♞:a1(♞g5)#. Reciprocal creation of neutral batteries using a neutral *Bulgarian leo*, which moves like a leo, but the hurdle must also make a leo move (otherwise the move is impossible). *Leo:* the Chinese queen, which moves like a normal queen, but captures like a lion (which moves and captures like a grasshopper, but its arrival square may be any number of squares beyond the hurdle, provided the line is free). *Camel:* 1:3 leaper. *Neutral piece:* belongs to which-ever side chooses to use it.

№ 4: 1. ♞c8 ♞c7+ 2. ♞d6 ♞:c5+ 3. ♞c7 ♞c2+ 4. ♞b2 ♞:e3=, 1. ♞g8 ♞g3+ 2. ♞f4 ♞:e3+ 3. ♞e5 ♞e2+ 4. ♞d2 ♞c5=. Model pin-stalemates with 4 pinned pieces in each solution. *Bulgarian grasshopper:* moves like a grasshopper ((0,1) + (1,1) hopper), but the hurdle must also make a grasshopper move (otherwise the move is impossible).

Judge: **Hans Gruber.**

Address & closing date: Entries to zoran.gavrilovski@gmail.com until **30 October 2025.**

Year of publication of the award: **2025.**